



KONICA MINOLTA

magicolor® 2550



Premium colour for small
workgroup printing



REVOLUTION IN COLOUR PRINTING



KONICA MINOLTA

magicolor® 2550

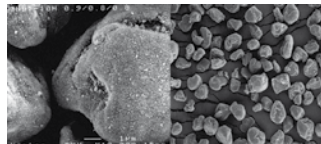
Premium colour for small workgroup printing

The magicolor® 2550 is a colour laser workgroup printer that offers fast and brilliant quality print outs. Thanks to its compact design, it sits quietly and conveniently in any office space. With its high versatility, the magicolor® 2550 is compatible with a wide range of office applications and network environments making it the ideal solution for business and graphic users.

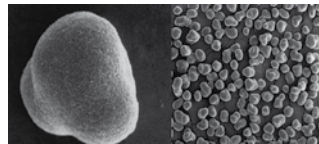
Speed, Quality and Power – the perfect combination

Size is not an attest to strength. However, the magicolor® 2550 encompasses all of the important elements you should find in a powerful workgroup printer: speed, quality and reliability. It prints at 5 pages per minute in colour and 20 pages per minute in monochrome, with a first page printout in just 13 seconds. Moreover, it is so quiet you will barely notice it. Power is delivered by means of the renowned Emperon™ controller. The magicolor® 2550 prints from virtually any application making it a versatile printing solution for your network environment. Still more power comes in the form of a rapid 300 MHZ page-processor and standard 128 MB RAM, allowing you to speed through heavy print jobs in no time. Superb colour printing defines the magicolor® 2550! It utilizes 600 x 600 dpi x 4-bit Photo ART™ contone technology for unrivalled print quality. Due to the variation of individual pixel colour, Photo ART™ contone accentuates printing precision, enhances image detail and provides smooth graduated colour tones. Print quality and consistency is further refined through the use of Simitri™ polymerised toners and eAIDC (enhanced Automatic Image Density Control). The result is photo quality prints in stunning colour!

Simitri

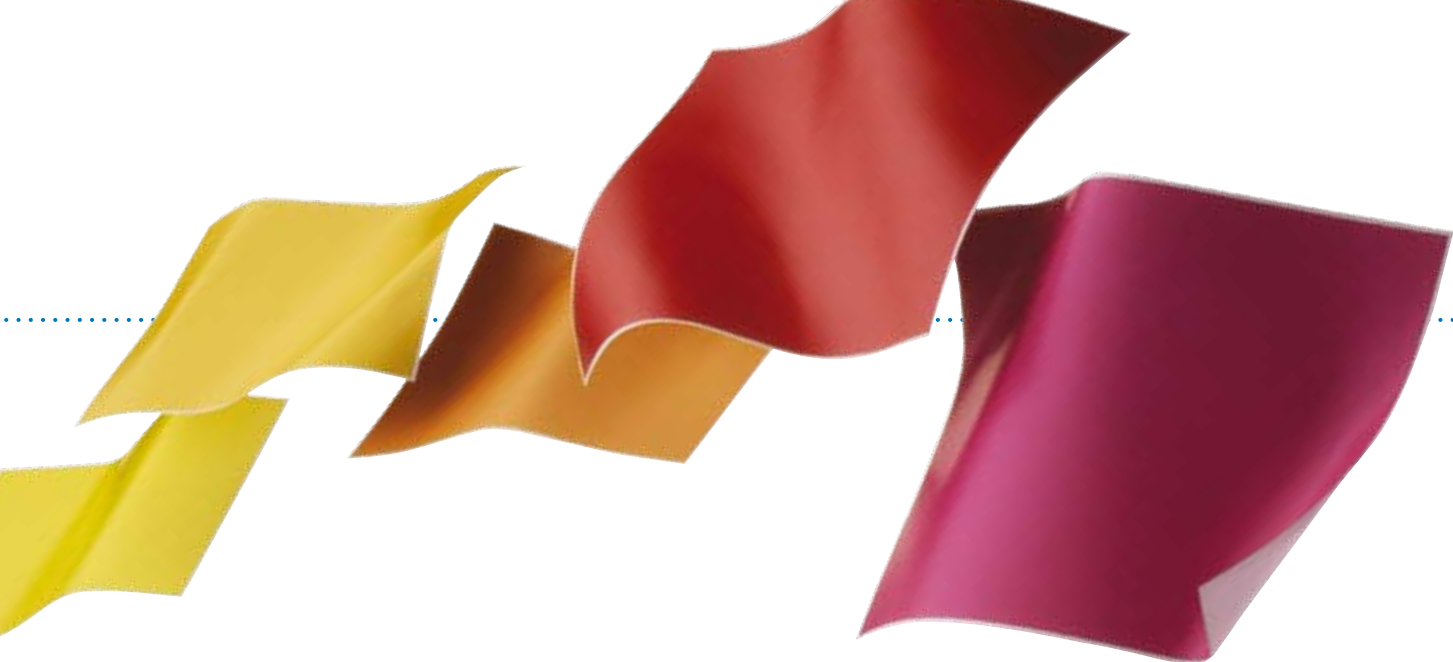


Conventional toner



Simitri™ polymerised toner





High paper capacity for in-house printing

Take your professional printing in-house. With the magicolor® 2550, you will have the added flexibility of printing your business documents on demand – saving you valuable time and money. Through the use of an optional automatic duplexer, you can create your own marketing materials in-house. An optional lower feeder provides you a maximum of 700 paper input capacity, which means that you will not have to interrupt important print jobs in order to load extra paper.

Keep costs at a minimum

The magicolor® 2550 is economical to run due to its pre-installed long-lasting toner cartridges and high capacity replacement toners, which results in a considerably low cost per page.

Intuitive through smart design

The magicolor® 2550 could not be easier to use! With pre-installed toner cartridges, you can connect your magicolor® 2550 and begin using it straight away. It has an intuitive, easy-to-read LCD display and the PageScope™ administration tools enable you to oversee and manage all essential information directly from your web browser– from toner levels to configuration settings. Full frontal access to paper and consumables – only five of which need replacing – makes your printer easy to maintain.

PowerPack™

The first of its kind, the PowerPack™ provides unprecedented value by offering customers a full range of complementary services. Upon registration at www.konicaminolta-powerpack.com, PowerPack™ members can benefit from the following:

- Up to 3 years warranty
- Guaranteed return value on a replacement printer
- Free product training and software

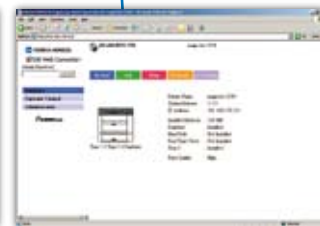


magicolor® 2550

Fully configured



Easy-to-read LCD display



PageScope™ administration tools

magicolor® 2550 at a glance:

- 5 ppm (colour), 20 ppm (monochrome)
- Ethernet, USB 2.0 (High-Speed) & Parallel
- PageScope™ administration tools
- 128 MB RAM (max. 640 MB)
- 600 x 600 dpi x 4-bit Photo ART™ contone resolution
- Thick paper support up to 200 g/m² *
- 5 easy to replace consumables
- Low noise printing
- Pre-installed consumable & network card
- Emperon™ controller
- PostScript® 3™ & PCL® XL emulations
- Windows® / Mac® / Linux® compatible



KONICA MINOLTA

magicolor® 2550

TECHNICAL DATA

Print process

Print method: Electro photographic printing system
Print speed: Up to 5 ppm colour, up to 20 ppm monochrome
First page out: 13 seconds monochrome, 22 seconds colour
Warm-up time: 55 seconds or less
Max. resolution: 600 x 600 dpi x 4-bit Photo ART™ contone; 600 x 600 dpi
Duty cycle: 35,000 pages per month

Hardware and software capabilities

Processor type: Freescale MPC8220i, 300 MHz
Memory: 128 MB (max. 640 MB)
Printer emulations: PostScript® 3™, PCL® XL 2.1, PCL® 5e/c/GL2, Line printer, PDF 1.3, PDF 1.4 Command Level
Printer management: PageScope™ Net Care, PageScope™ Web Connection, PageScope™ Network Setup, PageScope™ Peer to Peer Printing Tool, PageScope™ EMS plug-in, PageScope™ Web Jet Admin plug-in, PageScope™ Plug and Print, PageScope™ NDPS Gateway, PageScope™ Direct Print, download manager, print monitor, status monitor
Colour support: Enhanced Automatic Image Density Control (eAIDC)
Colour simulations: SWOP, commercial press, Eurocolor, DIC, TOYO Colour rendering dictionaries, PANTONE® colour tables, ICC device profiles

Typefaces

145 standard PostScript fonts, 89 PCL® Scalable fonts, 48 Symbol sets and 10 standard line printer fonts.

Interface support

Ethernet (10BaseT/100BaseTX) supports TCP/IP, EtherTalk®, NetWare® IPX/SPX, NetBIOS/NetBEUI, IPP1.1, SNMP, HTTP, UDP, SMB and UPnP.
Bidirectional IEEE 1284 parallel and USB 2.0 (High-Speed) 'Plug and Play' support.

Operating system compatibility

Windows®: Server 2003, XP, 2000, NT 4.0, ME, 98SE
Macintosh®: OS X 10.2 (or higher), OS 9.1 (or higher)
Linux®: RedHat 9.0, SuSe 8.2

Paper handling

Standard paper input: 200-sheet multi-purpose tray
Optional paper input: 500-sheet lower paper feeder (max. 1)
Paper output: 200-sheet (face-down)
Media sizes supported:
A4, B5, A5, legal, letter, Government letter/legal, statement, executive, folio, SP folio, UK Quarto, foolscap, Kai 16, 16K, 32K
Envelope sizes supported: Envelope #10, envelope C5, envelope C6, envelope DL, envelope monarch, Envelope Youkei #4, Envelope Choukei #3, Envelope Choukei #4, J-Postcard, double postcard, photo size 4x6", photo size 10x15, custom (92-216 * 210-356 mm)
Printable area: 4mm from all edges
Media type: Plain paper (60-90 g/m²), transparency, letterhead, envelope, label sheet, (thick paper 60 to 163 g/m², up to 200 g/m² with Mondi color copy 200 g/m², Cougar Cover 65lb), Japanese official postcard, glossy.

Physical

Dimensions: (D) 395 mm x (W) 430 mm x (H) 341 mm
Weight: Without consumables 15.9 kg, with consumables 19.3 kg

Dealer address

Electrical

Power requirements (220V/240V): VAC ±10%, 50/60 ±3% Hz
Power consumption (220V/240V): 1100 W (max.), average during printing <600W (monochrome), average during printing < 450 W (colour), < 250 W (standby)
Energy save: < 5 W
Energy Star compliant*

Environmental

Temperature requirements: 10° to 35°C (printing)
Humidity: 15% to 85% RH (printing)
Noise levels: <52 dBA, <35 dBA (standby)

Regulatory/Safety conformity

UL, cUL, FCC-B, DOC, VCCI, CE Marking, C-Tick, CDRH

Consumables¹

Printer ships with installed cyan, magenta, yellow and black toner (yield up to 4,500 pages)
Replacements toner cartridges:
Standard: Cyan, magenta and yellow (yield up to 1,500 pages)
High capacity: Cyan, magenta, yellow and black (yield up to 4,500 pages)

Warranty period and conditions

1 year PROTECT.REPAIR on-site warranty (within EU; local law applies)

¹ The stated life expectancy of each consumable in the printer is based on printing under specific operating conditions such as page coverage for a particular page size (5% coverage of A4). The actual consumables life will vary depending on the use and other printing variables including page coverage, page size, media type, continuous or intermittent printing, ambient temperature and humidity. For more information about toner life expectancy visit <http://printer.konicaminoltaeurope.com/tco>

² The combination of certain options may cause the product to become non-compliant. Energy Star compliance does not represent an EPA endorsement of any product or service. Specifications and accessories are based on the information available at the time of printing, and are subject to change without notice. For the latest information, please visit www.konicaminolta.eu/printer

* Thick paper 60 to 163 g/m², up to 200 g/m² with Mondi color copy 200 g/m², Cougar cover 65lb.

Model specific features

Print speed:	5 ppm colour, 20 ppm monochrome
Resolution:	Up to 600 x 600 dpi x 4-bit Photo ART™ contone
Memory (RAM):	Standard 128 MB (max. 640 MB)
200-sheet multi-purpose tray:	Standard
500-sheet lower feeder:	Optional
Automatic duplex:	Optional
USB 2.0 (High-Speed) interface:	Standard
Ethernet (10BaseTX/100BaseT):	Standard
Hard disk kit:	Optional

©2006 KONICA MINOLTA All rights reserved. Specifications are subject to change without notice. The KONICA MINOLTA logo, magicolor, Emperon and Simitri are trademarks or registered trademarks of KONICA MINOLTA. All other trademarks or registered trademarks are the property of their respective owners.

Websites:
www.konicaminolta.eu/printer
www.q-shop.com

Part Number: 1730994-001



Belgium and Luxemburg
Tel: (+32) 2 717 09 89 (French)
(+32) 2 717 09 91 (Dutch)
Fax: (+32) 2 717 09 26

France
Tel: (+33) 01 41 07 93 93
Fax: (+33) 01 40 83 01 10

Middle East
Tel: (+97) 1 4 335 2574
Fax: (+97) 1 4 335 2573

Spain
Tel: (+34) 90 222 32 27
Fax: (+34) 91 327 09 00

The Netherlands
Tel: (+31) 30 248 1200
Fax: (+31) 30 248 1211

For all other countries
Konica Minolta
Printing Solutions Europe B.V.
Tel: (+31) 30 248 1200
Fax: (+31) 30 248 1211

Denmark
Tel: (+45) 72 21 21 21
Fax: (+45) 72 21 21 22

Germany and Austria
Tel: (+49) 89 63 02 67 0
Fax: (+49) 89 63 02 67-67

Norway
Tel: (+47) 2 27 89 800
Fax: (+47) 2 27 89 850

Sweden
Tel: (+46) 8 622 51 00
Fax: (+46) 8 622 51 24

United Kingdom
Tel: (+44) 1784 442255
Fax: (+44) 1784 461641

Finland
Tel: (+358) 9 4 20 61
Fax: (+358) 9 4 20 62 00

Italy
Tel: (+39) 02 39 011 1
Fax: (+39) 02 39 011 219

Portugal
Tel: (+351) 949 21 26
Fax: (+351) 219 49 21 06

Switzerland
Tel: (+41) 43 322 90 20
Fax: (+41) 43 322 90 29

Ireland
Tel: (+44) 1800 23 00 00
Fax: (+44) 014 62 26 45